

★★★ SPECIAL ISSUE: PAINTING THE NATIONAL PARKS ★★★

*Previews of Works For Sale at Upcoming Shows*

JULY 2016

107

# WESTERN ART

## COLLECTOR





**Coleman Studios Gallery**, *Grizzlies in Yellowstone*, gouache, 18 x 36", by Michael Coleman.

## Coleman Studios Gallery

(801) 225-5766

[info@colemanart.com](mailto:info@colemanart.com)

[www.colemanart.com](http://www.colemanart.com)

**Michael Coleman**, for almost four decades, has sought to capture the heart and feeling of Yellowstone. His love of the outdoors endures in his passionate depictions of this historic place. Coleman looks to nature to find beauty in this life; his enthusiasm and love of his subject is a standard in American art. Soft spoken in public, his work speaks for him in almost all that he does.

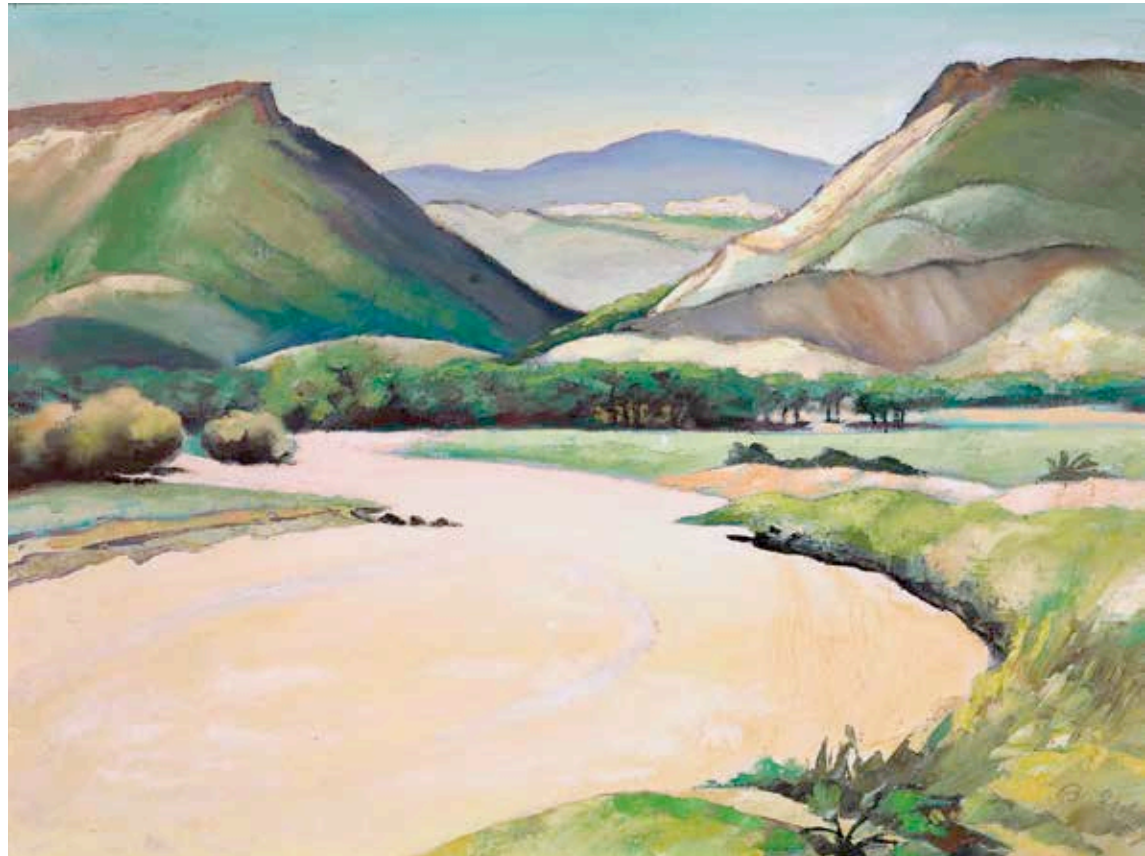
Coleman's latest piece for the *Jackson Hole Art Auction* is a special place; *Upper Geyser Basin - Steam and Clouds*, 21-by-36-inch oil on linen, is his tribute to the Park's 100 years.

## Gerald Peters Gallery

1005 Paseo de Peralta, Santa Fe, NM 87501, (505) 954-5700,

[www.gpgallery.com](http://www.gpgallery.com)

Gerald Peters Gallery in Santa Fe, New Mexico, represents the estates of numerous regional artists, most of whom were active members of



**Gerald Peters Gallery**, *River Valley*, oil, 18 x 24", by Cyrus Baldrige (1889-1977).

the Santa Fe Art Colony during the 1920s and 1930s.

While most of these artists moved to Santa Fe or Taos during the early decades of the 20<sup>th</sup>

century—**Frank Applegate**, **Jozef Bakos**, **Cyrus Baldrige**, **Andrew Dasburg**, **Joseph Fleck**, **Willard Nash**, **Helmuth Naumer**, and **Albert Schmidt** among them—

others, were short-term residents or summer visitors such as **Marjorie Eaton** and **Albert Krehbiel**.

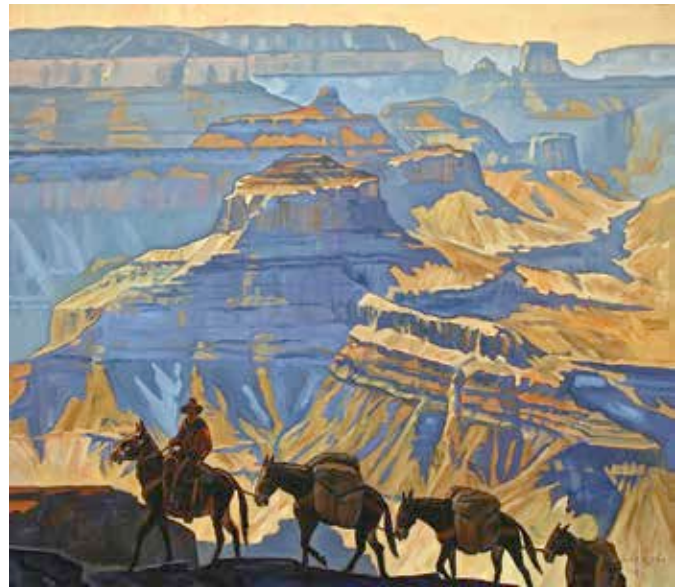
Whether they came to capture the colorful scenery, to benefit



**Mark Sublette Medicine Man Gallery**, *Spider Woman Emergence*, acrylic on canvas, 66 x 23", by Shonto Begay. Courtesy Mark Sublette Medicine Man Gallery, Tucson, Arizona.



**Mark Sublette Medicine Man Gallery**, *Mt. Moran, Grand Teton National Park*, September 1939, oil on canvas, 36 x 42", by Robert Clunie (1895-1984). Courtesy Mark Sublette Medicine Man Gallery, Tucson, Arizona.



**Mark Sublette Medicine Man Gallery**, *Grand Canyon Pack Train*, oil on canvas, 42 x 48", by Dennis Zieminski. Courtesy Mark Sublette Medicine Man Gallery, Tucson, Arizona.

from the low cost of living, or to take advantage of the clear, dry air, these early artists left a colorful artistic legacy that has greatly enriched the cultural history and artistic identity of the region.

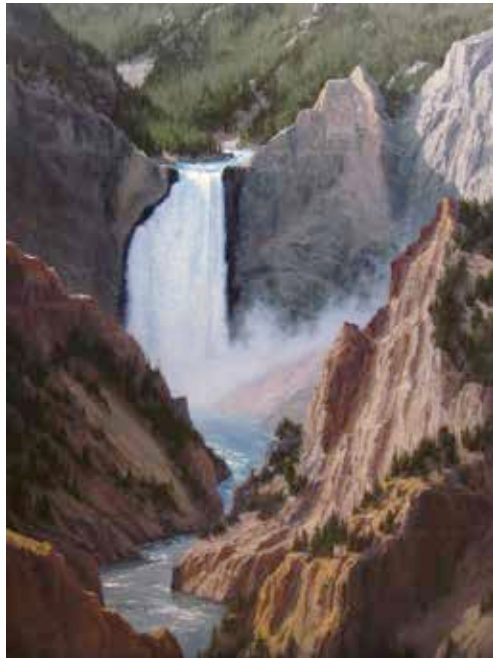
### **Mark Sublette Medicine Man Gallery**

6872 E. Sunrise Drive, Suite 130  
Tucson, AZ 85750  
(520) 722-7798, (800) 422-9382  
office@medicinemangallery.com  
www.medicinemangallery.com

Mark Sublette Medicine Man Gallery is pleased to support our national parks. The gallery is celebrated by collectors for its nationally acclaimed artists who emphasize the parks of the Southwest. Works by **Thomas Moran, Gustave Baumann, Gunnar Widforss, Louis Akin, Gregory Kondos, Greg Hull, P.A. Nisbet, Ed Mell, Gary Ernest Smith, Erin Hanson, Stephen C. Datz, Ray Roberts, and Merrill Mahaffey** brilliantly capture those elements that dazzle our senses



**Linda Tuma Robertson**, *Morning Fog At Schwabacher*, oil on canvas, 20 x 16"



**The Legacy Gallery**, *River Thunder, Yellowstone*, oil, 48 x 36", by Carole Cooke.



**Jackson Hole Art Auction**, *Mt. McKinley*, oil on canvas laid on board, 20 x 16", by Sydney Laurence (1865-1940). Sold for \$57,500 in 2012.

and capture our soul. Mell has been the featured artist at the *Grand Canyon Music Festival* for the last 30 years.

With nearly 7,000 square feet of showroom in Tucson, Arizona, there is a wide variety of subject matter and styles, including many paintings showcasing our national parks. All can be found at the gallery's website.

## Linda Tuma Robertson

4421 E. 90<sup>th</sup> Place, Tulsa, OK 74137, (918) 949-4316  
www.lindatumarobertson.com

Every year childhood trips to the national parks fueled **Linda Tuma Robertson's** love for those institutions. Her first artwork was done in them.

"I have painted in many of America's parks, but a favorite is Grand Teton National Park," she says. "While visiting it last September I first encountered the mountains hidden in clouds, but the next morning snow-covered peaks laced with fog were revealed. Within 30 minutes this mystical mood was replaced by a sunny autumn day showing off new white snow and God's handiwork."

*Teton Peak* and *Afternoon in the Valley* reflect the afternoon June light illuminating the summer greens and the winter snow still evident on the mountains.

Robertson is represented by Astoria Fine Art in Jackson, Wyoming, and Howell Gallery in

Oklahoma City.

## The Legacy Gallery

75 N. Cache, Jackson, WY 83001,  
(307) 733-2353  
www.legacygallery.com

The Legacy Gallery's three locations (Scottsdale, Arizona;

Jackson Hole, Wyoming; and Bozeman, Montana) are within close proximity to some of the most popular national parks in the country: the Grand Canyon, Canyon de Chelly, Grand Teton, Yellowstone, and Glacier—key components to many of the



**The Legacy Gallery**, *Teton Majestic Peaks*, oil, 50 x 72", by Kenny McKenna.

CONTINUED ON PAGE 81

**Jackson Hole Art Auction**, *Yosemite Sentinel*, oil on canvas, 30 x 40", by G. Harvey. Sold for \$69,000 in 2011.

gallery artists' subject matters.

Paintings like **Kenny McKenna's** *Teton Majestic Peaks* show the towering peaks of the Tetons in the fall, one of the most beautiful times of year there. **Robert Peters' Arizona Giant** depicts exactly that, the magnitude of such a unique mountain in Monument Valley, while **Carole Cooke** painted the roaring waters of Yellowstone Falls in her painting *River Thunder, Yellowstone*. These are just a few examples of paintings The Legacy Gallery has of national parks.



**Frank Serrano**

(310) 869-3200  
frankserrano@sbcglobal.net  
www.pleinairgallery.com

**Frank Serrano** is known by collectors for his captivating paintings of the Western American landscape. His

California studio is where most of his larger works are created, but he can be found most often traveling the West, painting on location along a river, or on a ranch, in his "outdoor studio."

Serrano paints with a keen sense, observing the landscape

and atmosphere around him, carefully crafting his personal connection with it onto canvas. "I love being outside, traveling by horseback into the high country, camping and painting for a few days, with no distractions of modern life," he says.

**Jackson Hole Art Auction**

130 E. Broadway, P.O. Box 1568  
Jackson, WY 83001, (866) 549-9278  
coordinator@jacksonholeartauction.com  
www.jacksonholeartauction.com  
The Jackson Hole Art Auction

Vertical, Acrylic, 24" X 36"

**BRENDA THOMAS**  
brendathomasart.com | brenda@brendathomasart.com



**Jackson Hole Art Auction**, *Grand Canyon*, 1968, oil on canvas, 31 x 47", by Clark Hulings (1922-2011). Sold for \$345,000 in 2011.



**C.M. Russell Museum**, *Storm on Lake McDonald*, 1906, watercolor and gouache on paper, 17¼ x 23¼", by Charles M. Russell (1864-1926). Collection of the C.M. Russell Museum, Great Falls, Montana; Gift of the Josephine Trigg Estate, 953-1-0017.



**Frank Serrano**, *Rocky Mountain Lake*, oil, 12 x 16"

is proud to be located at the gateway to Grand Teton National Park and Yellowstone National Park, two exceptional national treasures. These landscapes have served as powerful inspiration to artists for decades.

The *Jackson Hole Art Auction* holds outstanding results with paintings depicting the national parks, including works by **Thomas Hill**, **Clark Hulings**, **Wilson Hurley**, **Sydney Laurence**, and many more. The *Jackson Hole Art Auction* holds the world record for Huling's *Grand Canyon*. The masterwork realized

\$345,000 in the 2011 auction.

The next *Jackson Hole Art Auction* will be September 16 and 17.

### C.M. Russell Museum

400 13<sup>th</sup> St. North, Great Falls, MT 59401, (406) 727-8787

Emily Wilson, Assistant Curator, ewilson@cmrussell.org www.cmrussell.org

For more than a century, artists have shaped America's perception of the national parks through their paintings, photographs

and sculptures. In honor of the National Park Service's 100<sup>th</sup> anniversary and the C.M. Russell Museum's commitment to sharing the work of Montana artist **Charles M. Russell** and his contemporaries, the museum presents *Going to the Sun: Artists in Glacier National Park*, a full-scale exhibition celebrating the pioneering artists who captured the landscape, wildlife and people of Glacier National Park during the early 20<sup>th</sup> century. Over 140 objects are on display to tell the story of

how artists, park leaders and the Great Northern Railway worked together to promote Glacier Park to a national audience.

### Steamboat Art Museum

807 Lincoln Avenue, P.O. Box 883434 Steamboat Springs, CO 80488 (970) 879-1755

sam@steamboatartmuseum.org www.steamboatartmuseum.org

The Steamboat Art Museum presents *Milestones: Celebrating the 30<sup>th</sup> Anniversary of Plein-Air Painters of America & 100 years*



**LeQuire Gallery**, *Up She Rises*, oil on canvas, 18 x 24", by Lori Putnam.



**LeQuire Gallery**, *Treescape*, oil on canvas, 16 x 20", by Lori Putnam.

of the National Park Service August 5 through October 15 in Steamboat Springs, Colorado. The exhibit features the spectacular landscapes of our country's national parks by more than 30 members of the original society of outdoor artists. The PAPA artists will participate in a Steamboat Paint-Out beginning June 8, culminating in a special *Paint with PAPA* day on August 12, an open instruction/paint along day for registered patrons. The opening reception will be August 12.

## LeQuire Gallery

4304 Charlotte Avenue, Nashville, TN 37209, (615) 298-4611  
[info@lequiregallery.com](mailto:info@lequiregallery.com)  
[www.lequiregallery.com](http://www.lequiregallery.com)

Recognized for her expressive brushwork, intelligent composition and superb use of color, **Lori Putnam** paints small works plein air and creates large paintings in her studio, traveling extensively to paint as well as teach. As an artist faculty demonstrator for the annual *Plein Air Convention*, she shares her philosophy and painting methods with its 700 attendees.

"Landscape painters today and throughout the history of the National Park Service serve and have served as explorers,

**Paul Dykman**, *Avalanche Reflections*, oil, 24 x 30"

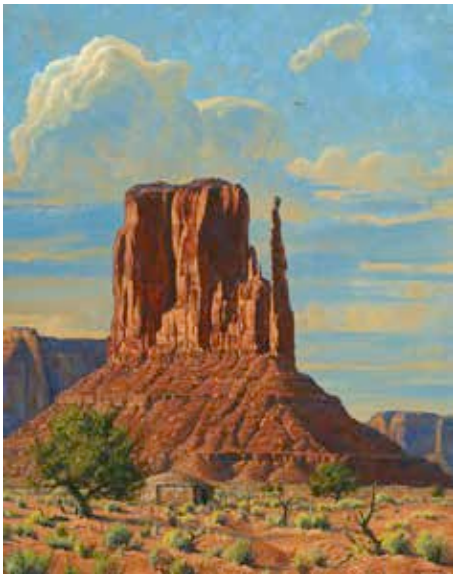


**C.M. Russell Museum**, *Mountain Landscape*, oil on canvas, 48 x 64", by Carl Rungius (1869-1959). Collection of the C.M. Russell Museum, Great Falls, Montana, 993.22.



**Steamboat Art Museum**, *Tower of RA and Ninety Mile Creek*, oil, 12 x 9", by Ron Rencher.

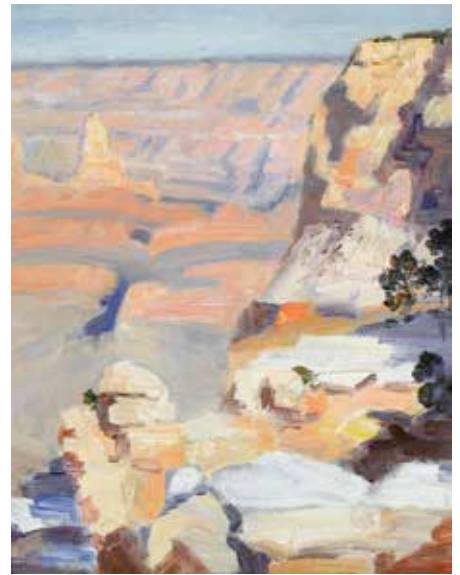




**The Legacy Gallery**, *Arizona Giant*, oil, 50 x 40", by Robert Peters.



**Coleman Studios Gallery**, *Tower Falls*, gouache, 13 x 10", by Michael Coleman.



**Gerald Peters Gallery**, *Grand Canyon*, oil on board, 10¼ x 8¼", by Albert Schmidt (1895-1957).

historians, documentarians, conservationists and reporters," she says. A selection of Lori Putnam's *Paintings of National Parks* will be on view and available at LeQuire Gallery in July.

## Paul Dykman

[www.pauldykman.com](http://www.pauldykman.com)

Residing in Flathead Valley, Montana, **Paul Dykman** finds inspiration for his artwork in the surrounding mountain ranges. He holds a distinct interest in the American West, focusing his artwork on Western landscapes, the working cowboy and the American Indian. Working in oils on canvas, Dykman uses a combination of brush and palette knife; preferring the palette knife exclusively for his landscapes.

When asked what inspires him in his subject and scenery selection, Dykman says he is drawn by the play of light on the subject and the unique colors in the shadows.



**Paul Dykman**, *Spring in Glacier*, oil, 20 x 24"

## Cindy Sorley-Keichinger

(780) 847-2294,

[goldfarm@telusplanet.net](mailto:goldfarm@telusplanet.net)

[www.goldenstudio.com](http://www.goldenstudio.com)

*Picture This Gallery*, (800) 528-4278

[www.picturethisgallery.com](http://www.picturethisgallery.com)

**Cindy Sorley-Keichinger** is primarily self-taught, but has

taken workshops with top artists in her genre. Her subjects of choice are landscapes and wildlife. She finds them calming, and tries to project that in her work. Sorley-Keichinger works in acrylic primarily, but also uses gouache and oil.

She is a member of several artist organizations, and is

particularly proud to have been asked to join the Artists for Conservation, and designed a coin for the Royal Canadian Mint.

## Pamela Reese

(203) 313-0585

[pamelareese4@gmail.com](mailto:pamelareese4@gmail.com)

[www.pamelareesestudio.com](http://www.pamelareesestudio.com)

**Pamela Reese** is drawn to

landscapes—country lanes, rushing water and deer paths that depict her desire to hit the road for new vistas. Black Canyon of the Gunnison National Park is narrow and deep carved into the land by the Gunnison River, giving the canyon dramatic blue and purple shadows and strips of pink granite. Reese's daughter is



a National Park Service wildlife biologist so the artist visits often, always finding another inspiring scene to paint.

**Dawn Sutherland**

2300 W. Kiltie Lane, Flagstaff, AZ 86005, (928) 593-0604

dawn@dawnsutherlandfineart.com  
www.dawnsutherlandfineart.com

Dawn Sutherland's inspiration is drawn from both grand and subtle

aspects of the Southwestern landscape, the play of light and shadow, and the delicate margin upon which all life exists.

An avid gardener and hiker, she moved to Arizona with her husband, Stan, in 2004. There, her oil paints and brushes met the challenge of intense blue skies, distant horizons, canyon mazes and crazy quilts of wildflowers blanketing the earth.

Sutherland likes to paint plein air capturing the "depth and feeling of the landscape before me. I feel there is almost always a near perfect composition provided by nature."

**Brenda Thomas**

brenda@brendathomasart.com  
www.brendathomasart.com

Brenda Thomas is in awe of the national parks in Southern Utah

with the delicate lacy hoodoos of Bryce Canyon and impossible structures of Arches, but Zion is where she most often goes. "It has relatable elements of vegetation and water—a gentler design within its daunting scope," she says.

Peacefully gazing at a magnificent wall of red rocks with green, one's attention briefly diverted, and now seeing a



Gerald Peters Gallery, *Rio Grande on Way to Los Alamos, New Mexico*, pastel, 21¼ x 27½", by Helmuth Naumer (1907-1989).



Linda Tuma Robertson, *Teton Peak*, oil on canvas, 24 x 20"



Linda Tuma Robertson, *Afternoon In the Valley*, oil on canvas, 24 x 20"



Coleman Studios Gallery, *Winter in Yellowstone*, oil on panel, 14 x 20", by Michael Coleman.



Steamboat Art Museum, *Exploring Apostle Island Sea Caves*, watercolor, 14 x 19", by Andy Evanson.



Frank Serrano, *Bison Sketch*, oil, 8 x 10"



Cindy Sorley-Keichinger, *Summer Romper*, acrylic, 18 x 24"



Pamela Reese, *Black Canyon of the Gunnison National Park*, pastel, 18 x 12"



Naomi Brown, *Oasis of Mara Sunrise, Joshua Tree National Park Headquarters*, oil on canvas, 16 x 40"